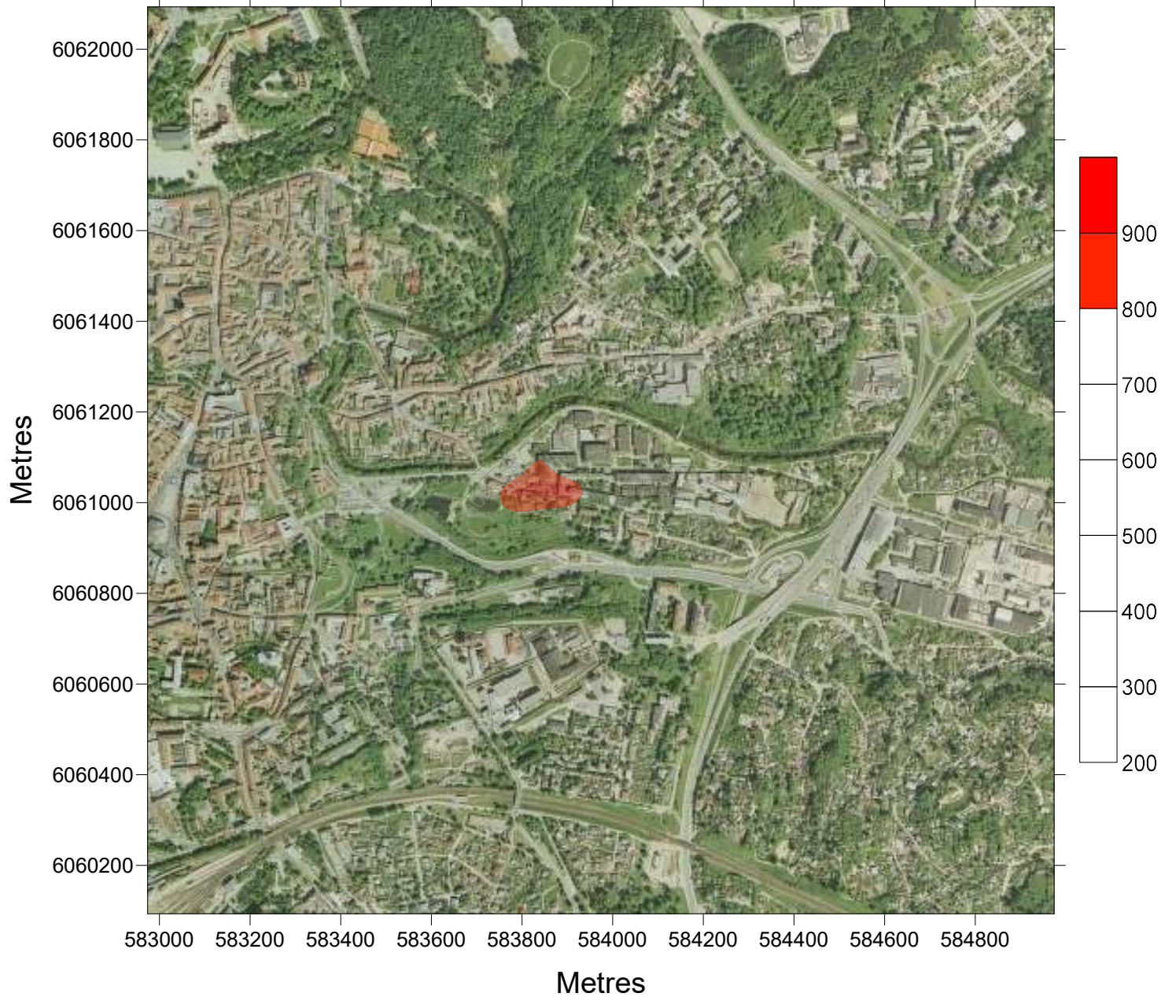


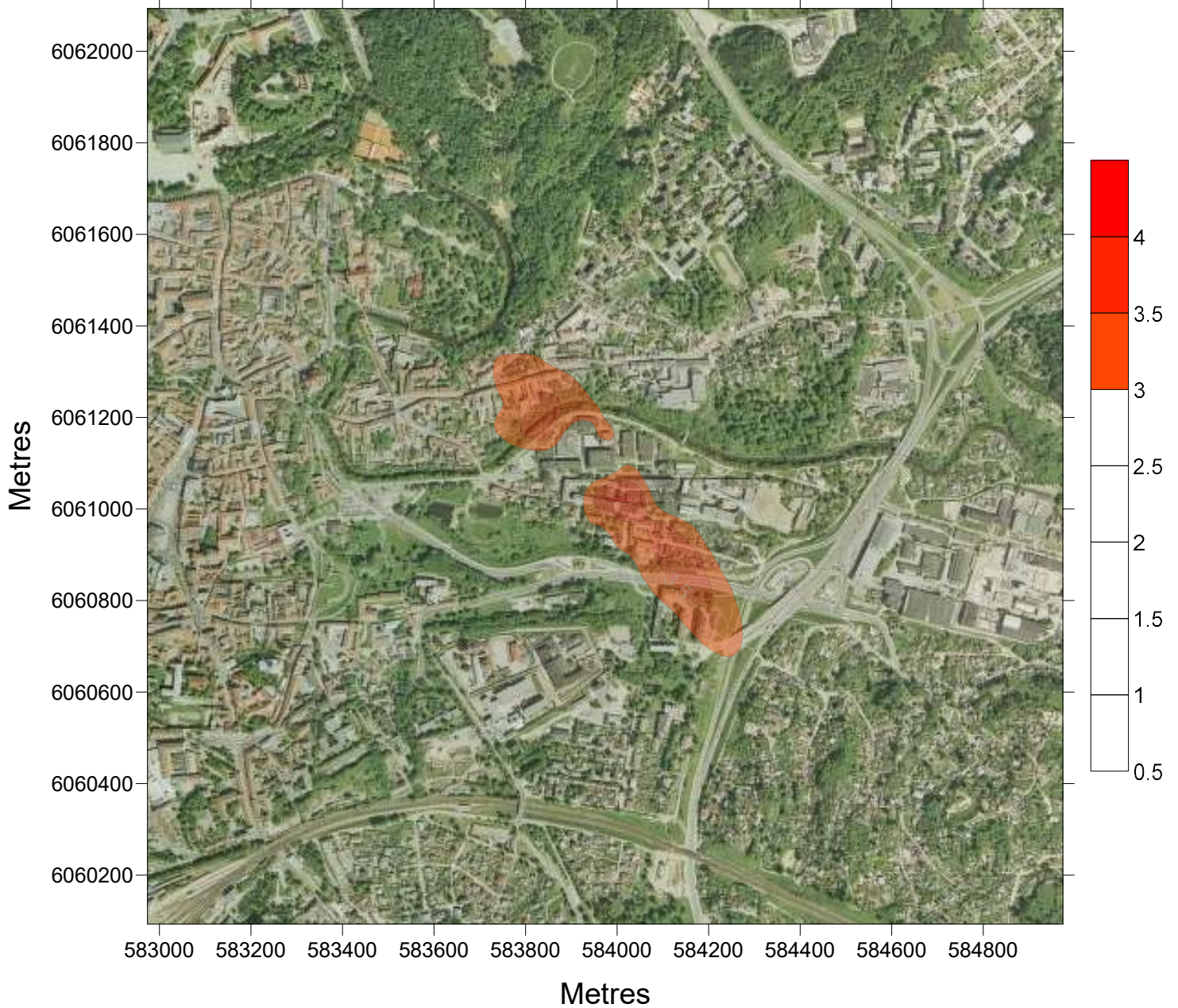
**P100.00 $\mu\text{g}/\text{m}^3$  CO**

**BE FONO Z=1.5m r 8hrs**



**P100.00 $\mu\text{g}/\text{m}^3$  KD (deginant)**

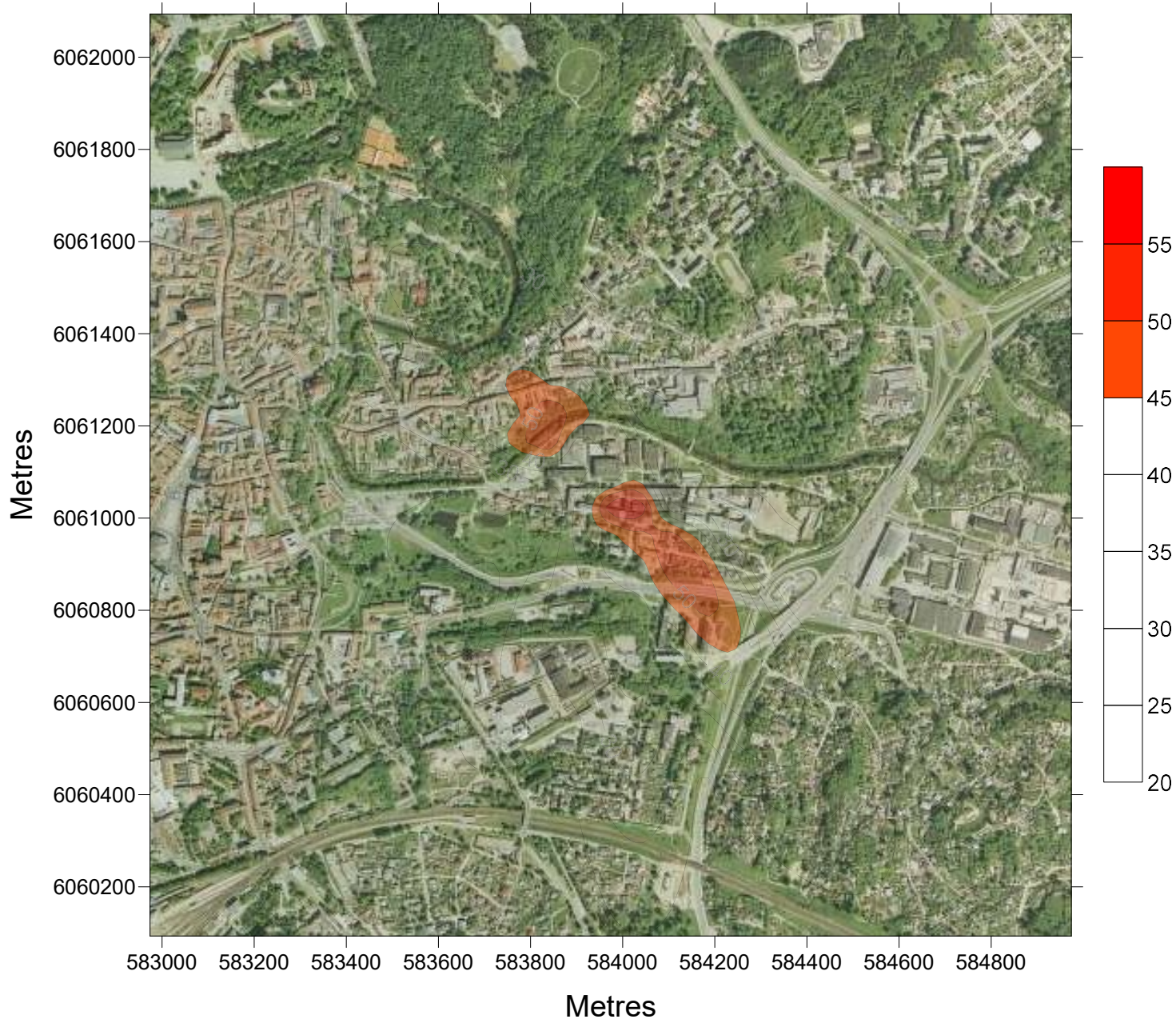
**BE FONO Z=1.5m - 24hrs**



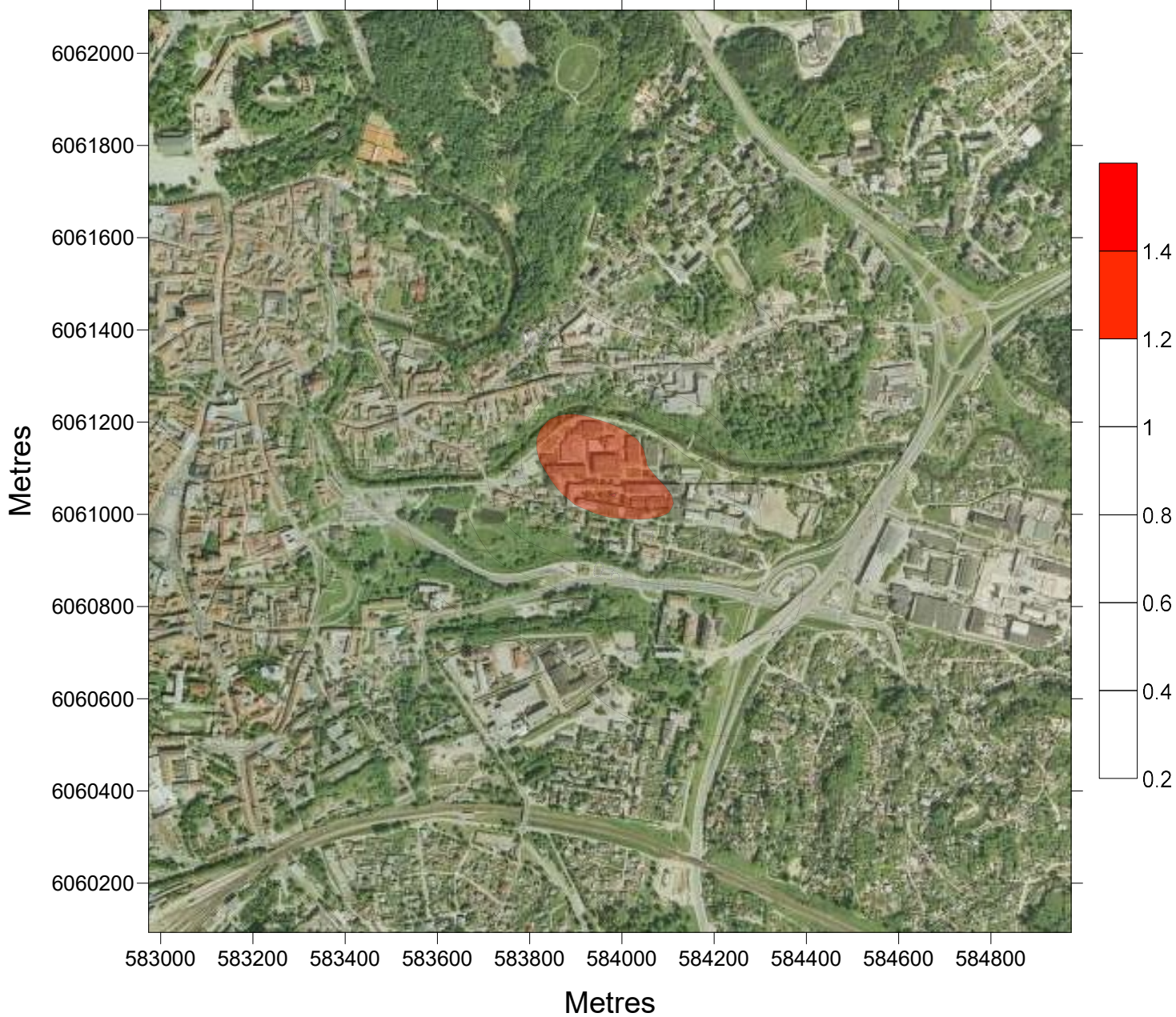
**P100.00 $\mu\text{g}/\text{m}^3$  KD (išskyrus deginant)**

**BE FONO**

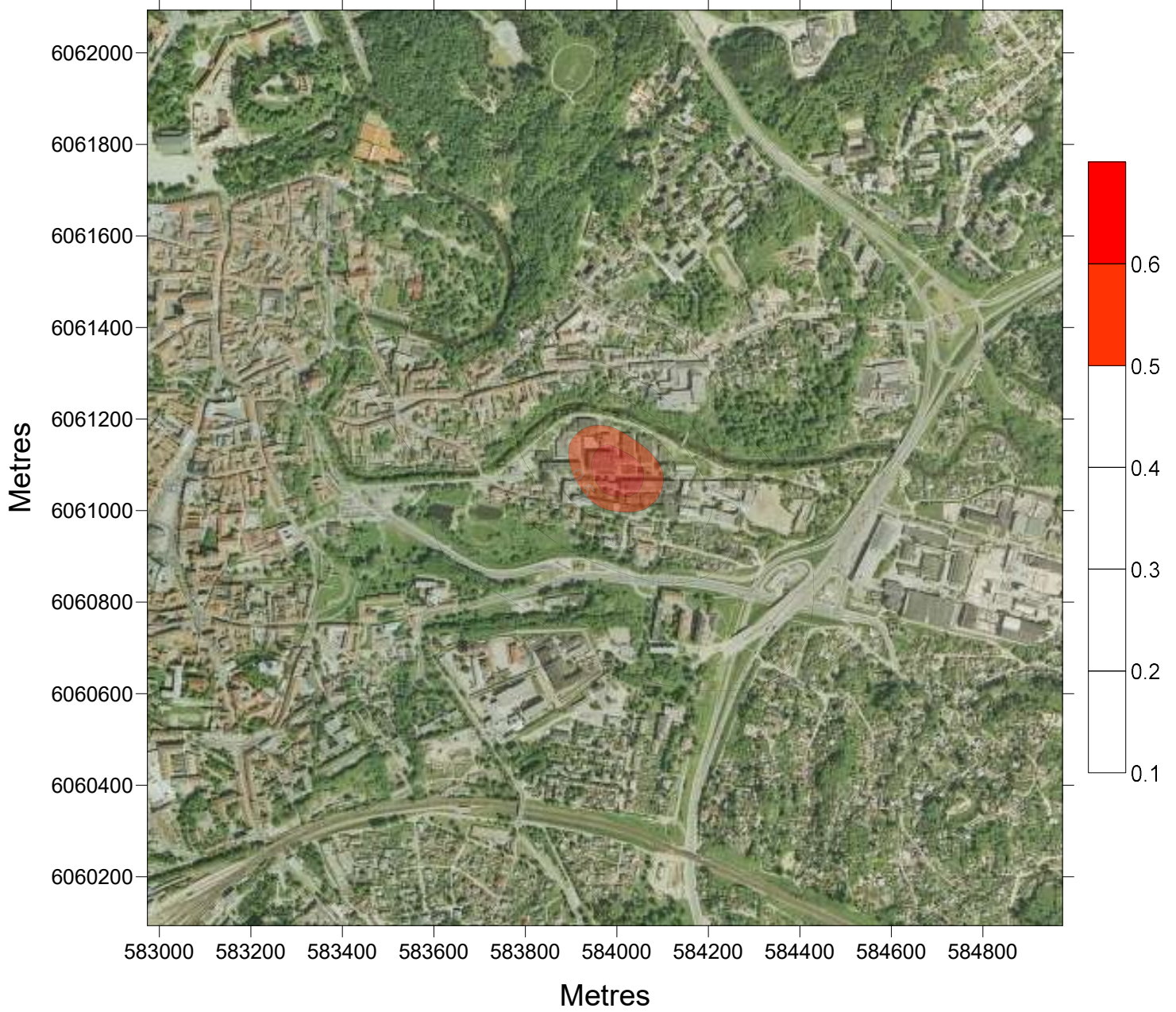
**Z=1.5m - 24hrs**



**P 98.50 $\mu\text{g}/\text{m}^3$  KD (deginant) BE FONO Z=1.5m - 1hr**

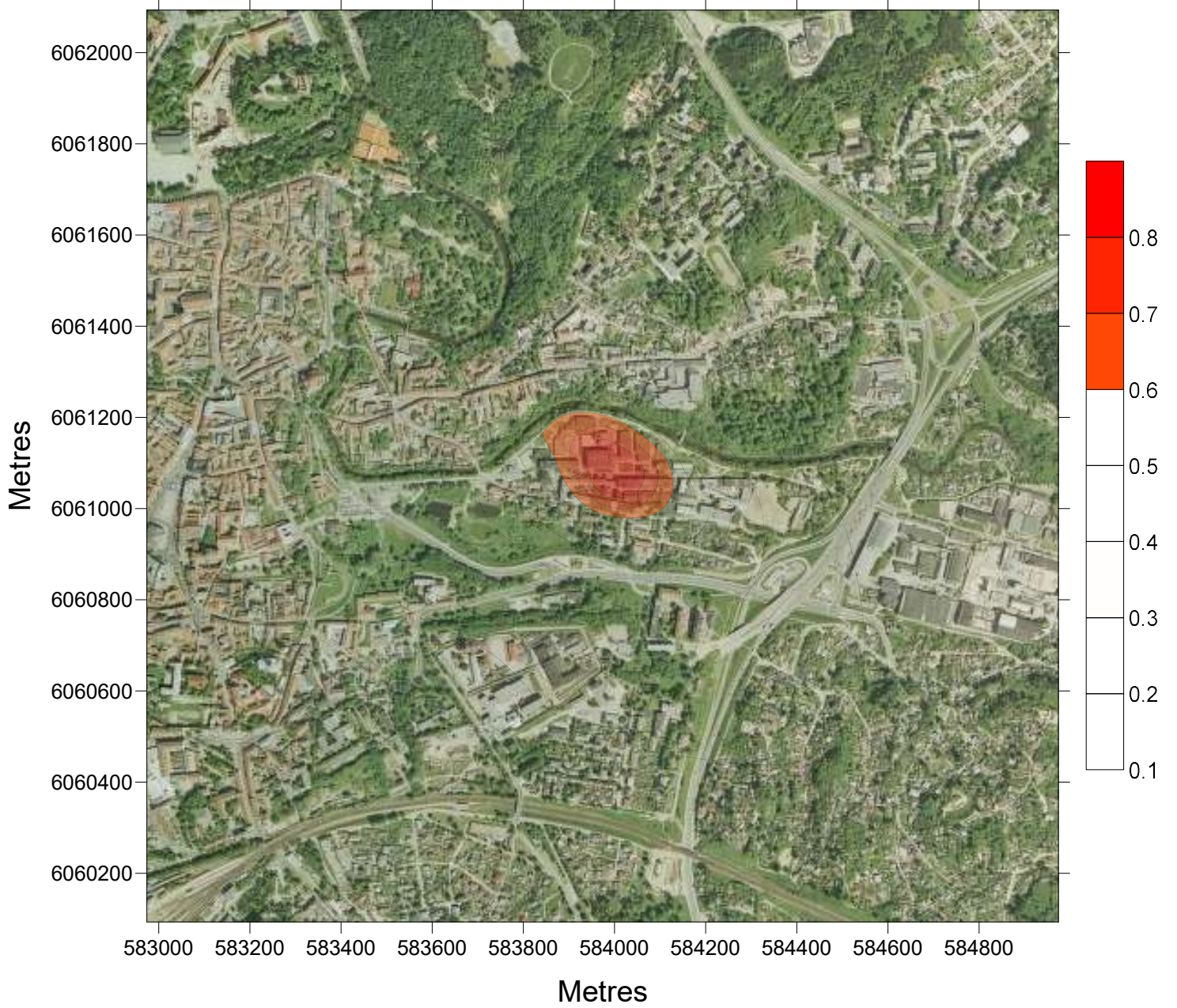


**LTConc  $\mu\text{g}/\text{m}^3$  KD2.5 BE FONO Z=1.5m - 1hr**



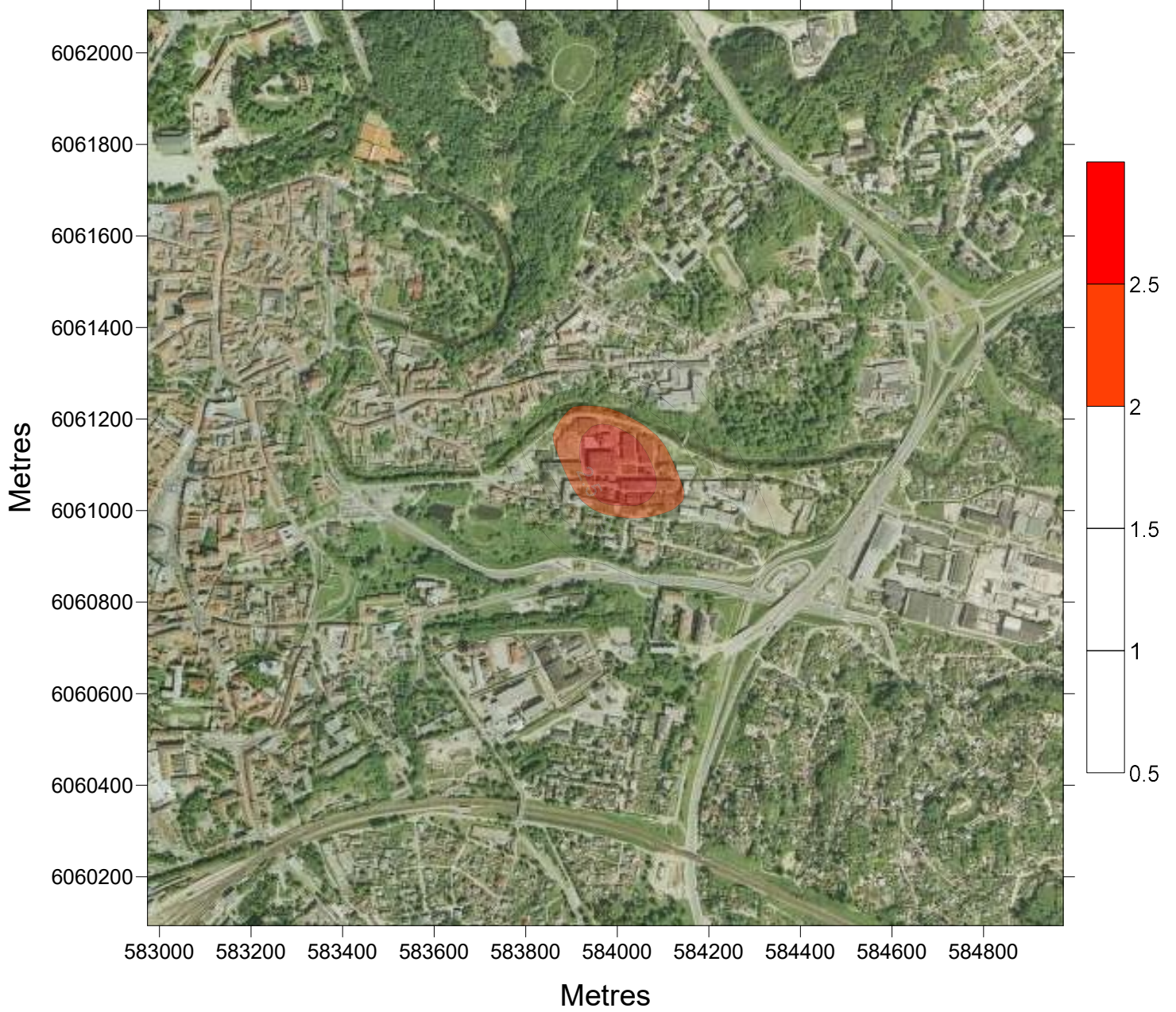
**LTConc  $\mu\text{g}/\text{m}^3$  KD10**

**BE FONO Z=1.5m - 1hr**



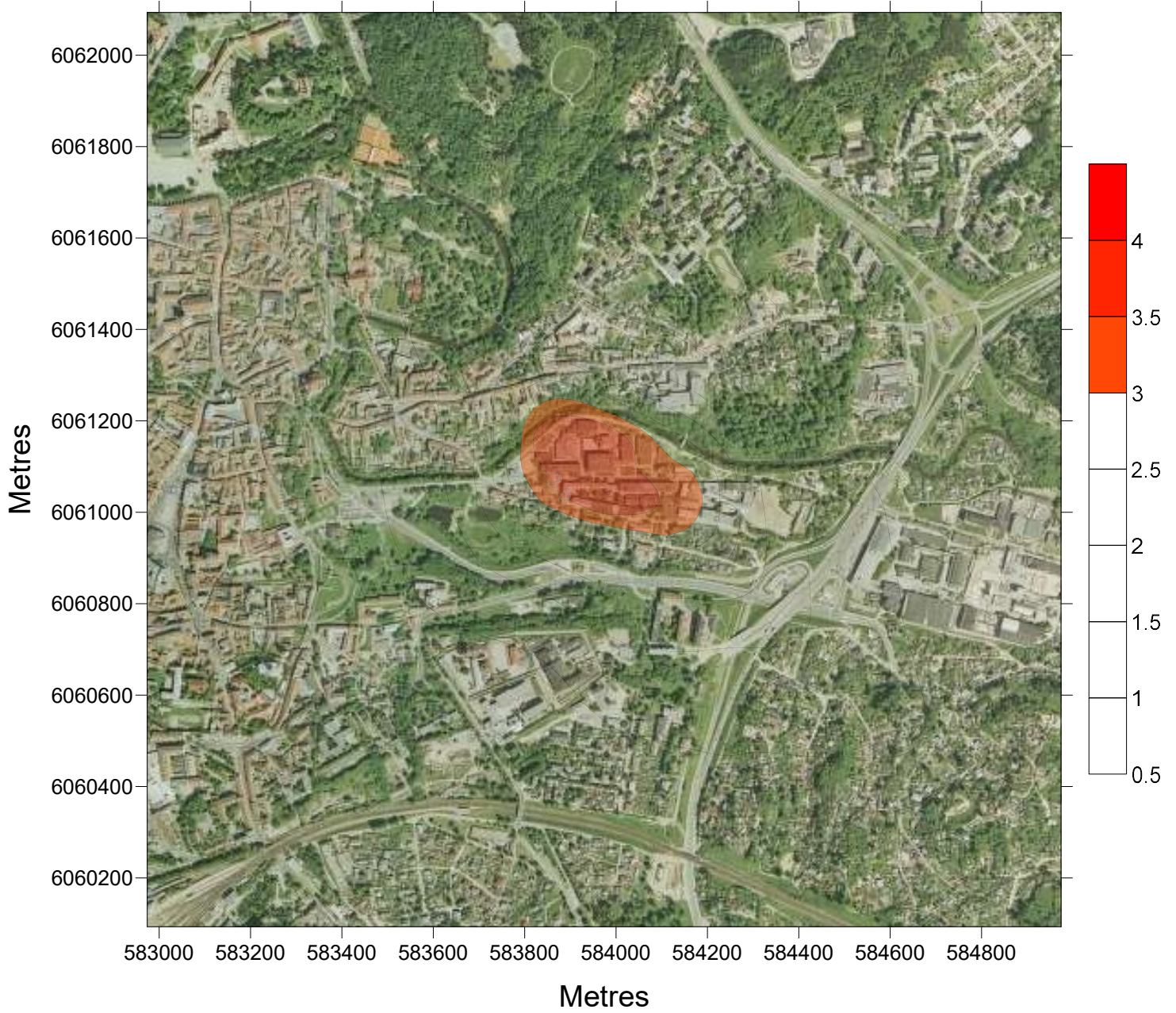
**P 90.40 $\mu\text{g}/\text{m}^3$  KD10**

**BE FONO Z=1.5m - 24hrs**



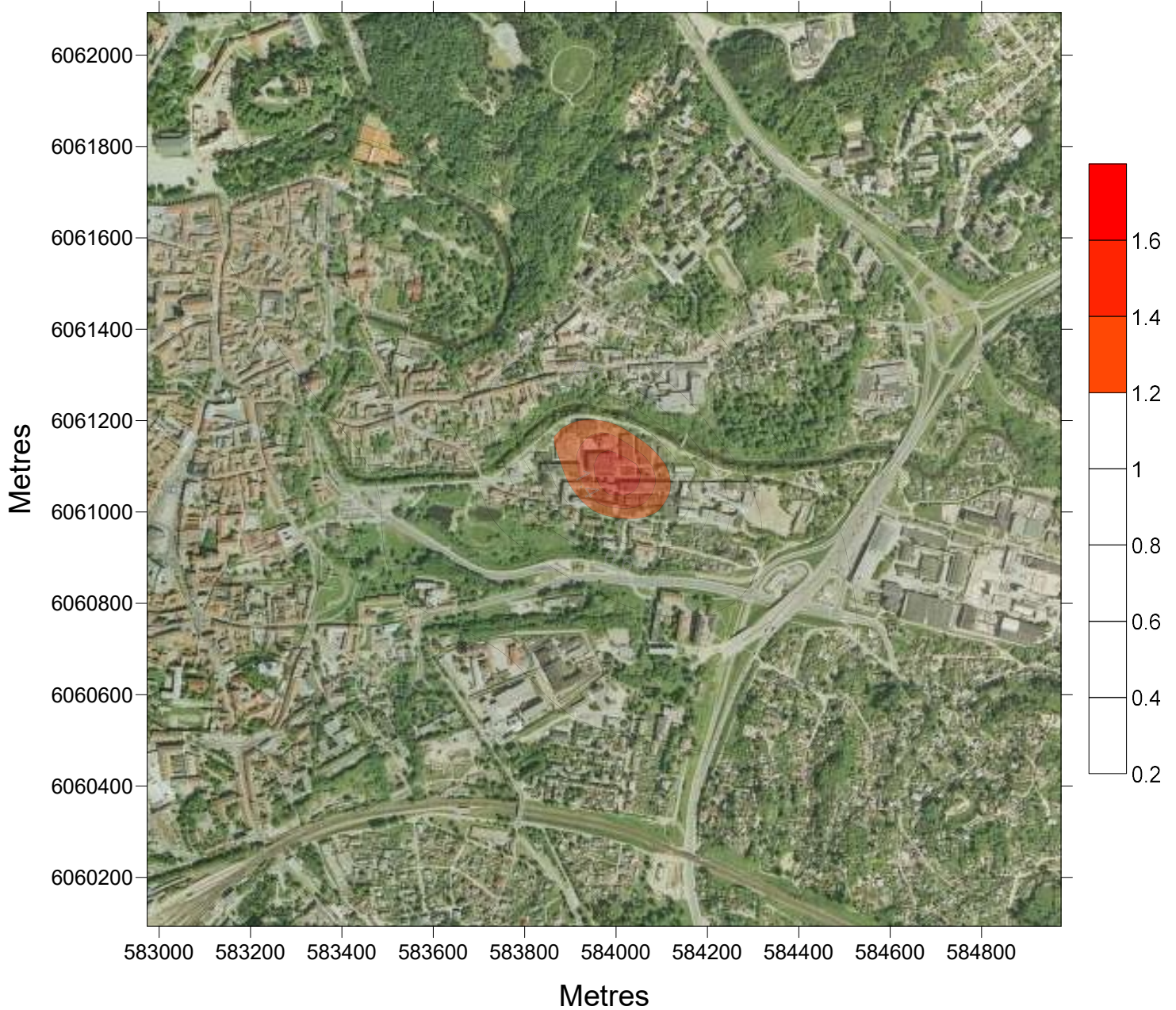
**P 98.50 $\mu\text{g}/\text{m}^3$  LOJ**

**BE FONO Z=1.5m - 1hr**



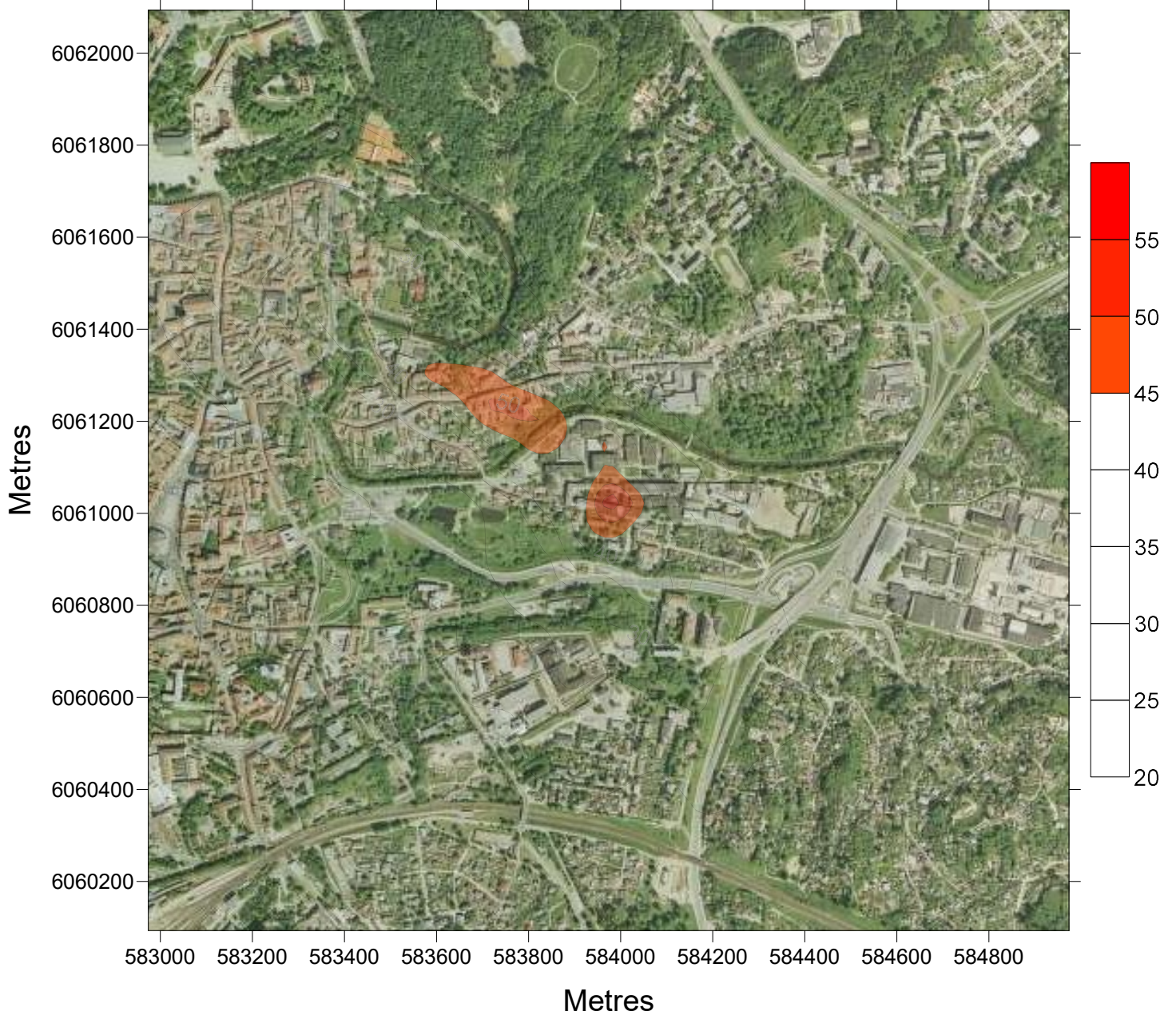


**LTConc  $\mu\text{g}/\text{m}^3$  NOx      BE FONO    Z=1.5m - 1hr**



**P 99.80 $\mu\text{g}/\text{m}^3$  NOx**

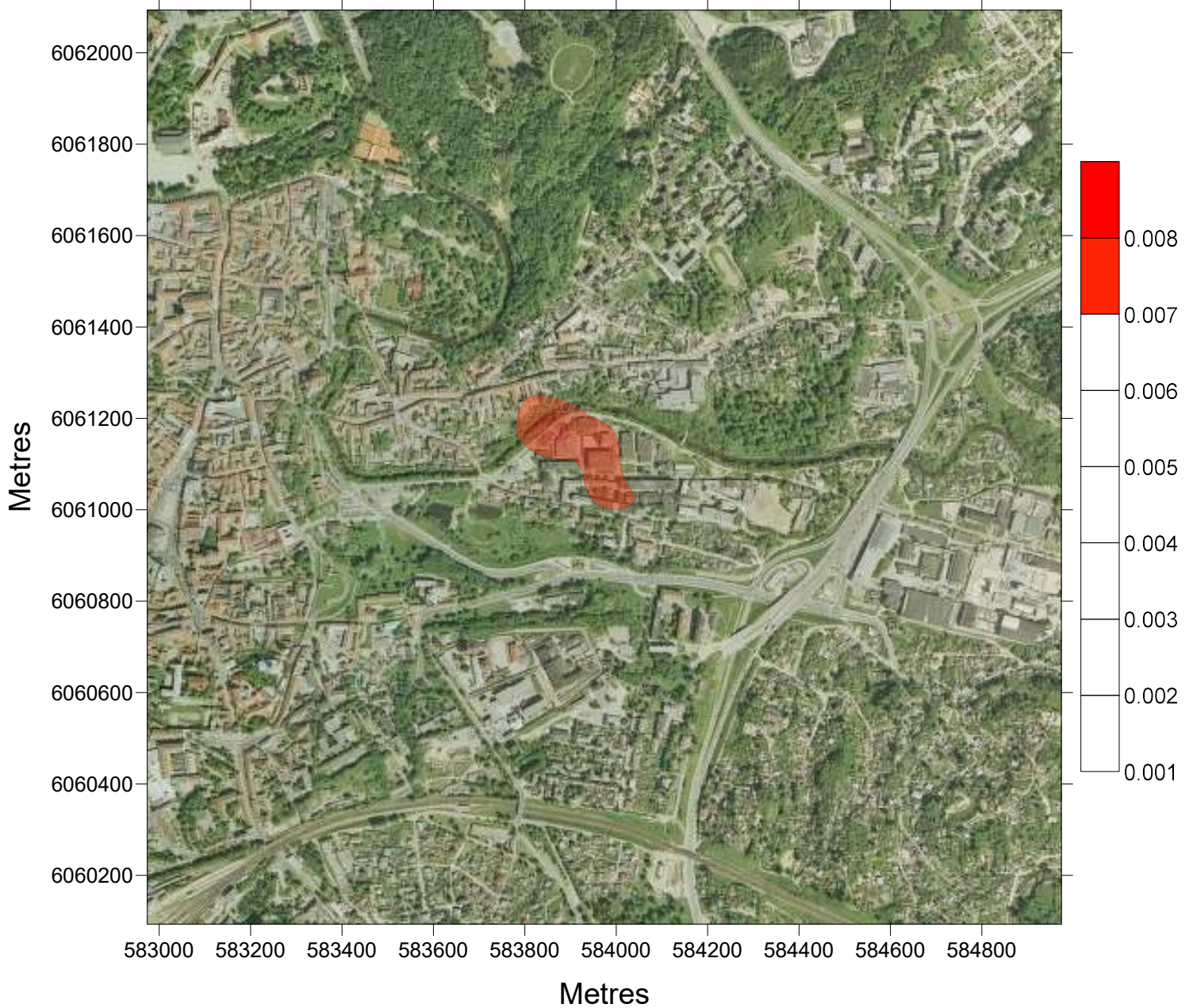
**BE FONO Z=1.5m - 1hr**



**P 99.20 $\mu\text{g}/\text{m}^3$  SO<sub>2</sub>**

**BE FONO**

**Z=1.5m - 24hrs**



**P 99.70 $\mu\text{g}/\text{m}^3$  SO2 BE FONO Z=1.5m - 1hr**

